

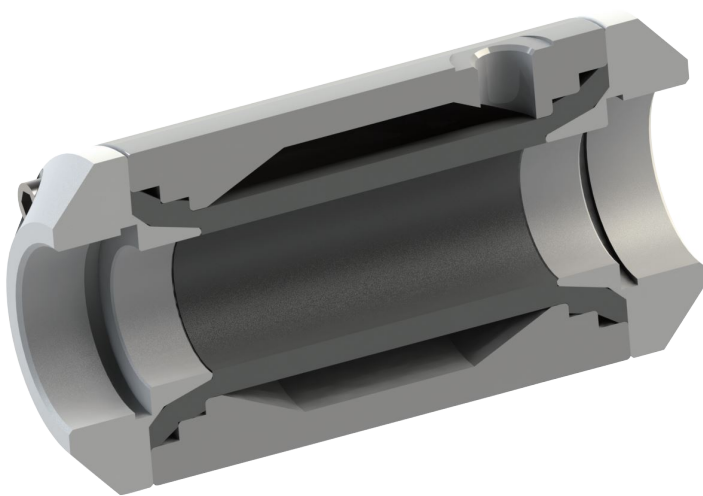
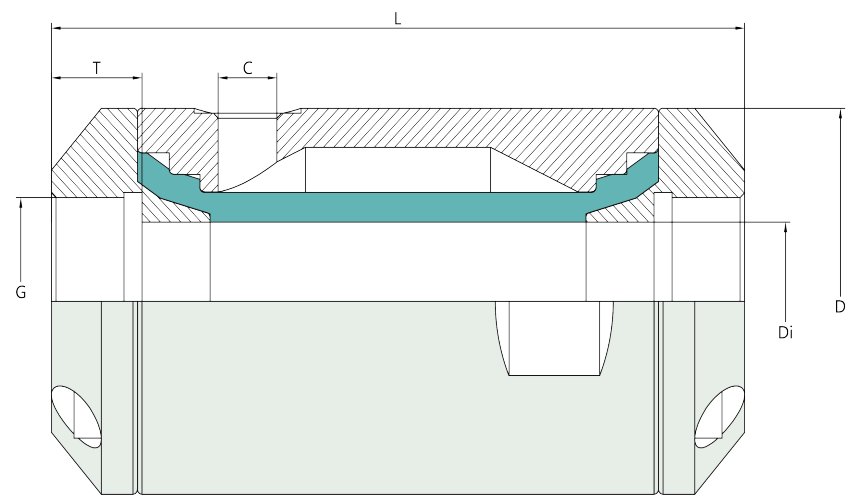
Features	
Design	Pneumatically actuated pinch valve
Structure code	S1
Sealing principle	Elastic lip seal
Mounting position	Any
Type of mounting	In-line installation
Direction of flow	Reversible
Valve function	2/2 way,normally open
Reset method	Rebound resilience
Nominal pressure	PN10
Sleeve feature	Replaceable
Connection	G,BSP,NPT female thread

Operating and environmental condition	
Ambient temperature [°C]	-5.....+60
Storage temperature [°C]	6.....+20
Medium pressure [bar]	0.....6
Pressure difference [bar]	2.5.....3
Optimum control pressure	Medium pressure+Pressure difference
Compressed air to	ISO 8573-1:2010
Alloy surface	Primary color anodizing



Inquiry model: BMPS12+Size+Valve material+Sleeve

Material	
Housing	POM,Wrought aluminum alloy, Wrought stainless steel
Socket	POM,Wrought aluminum alloy,Wrought stainless steel
Seal or sleeve	Anti-abrasive natural rubber,EPDM,NBR,.....
Bolts	Stainless steel 304



DN (mm)	Di (mm)	G (Inch)	L (mm)	D (mm)	T (mm)	C	Vol.l	Weight KG
10	10	3/8"	84	47	12	G 1/8"	0.04	0.2
15	15	1/2"	99	52	14	G 1/8"	0.05	0.3
20	20	3/4"	119	61	17	G 1/8"	0.07	0.4
25	25	1"	140	67	20	G 1/8"	0.85	0.5
32	32	1 1/4"	153	80	20	G 1/4"	0.15	0.8
40	40	1 1/2"	166	93	20	G 1/4"	0.25	1.2
50	50	2"	187	116	25	G 1/4"	0.36	1.8

Note: pneumatic pinch valve

- 1.Anti-abrasive natural rubber ,EPDM sleeve are widely used, others on request,please refer sleeve technical sheet.
- 2.Other size or dimension on request.
- 3.Body and socket material:natural white POM,black POM,Wrought aluminum alloy,stainless steel,others on request.
- 4.Connection are G,BSP,NPT female thread,others on request.